

# METALwrap™ SERIES

Insulated Composite Backup System

Single Source Inside | Multiple Materials Outside



# METALwrap SERIES



## The Product of Choice for Metal. Now the Product of Choice for Brick and Terra Cotta.

Installing an effective back-up wall that keeps moisture out, heat in and the project on time and on budget is never easy. Typically, the traditional process involves multiple layers of batt or board insulation, exterior gypsum board, air barriers, vapor retarders or building wraps. All these layers can result in breakdowns that can lead to moisture build-up and entrapment within the wall cavity resulting in corroded studs, poor insulation and mold, as well as the higher costs associated with multiple crews at the job site and numerous site deliveries.

CENTRIA understands the challenge and has the solution. The MetalWrap Series insulated composite backup panel is a single thermal, air and moisture barrier backup system that can be used with metal, brick and terra cotta exteriors.

This flexibility makes the MetalWrap Series the perfect solution for either single-exterior or mixed-medium buildings since only one system and specification is needed. Plus, the energy and cost savings of the MetalWrap Series technology have made it the thermal and weather barrier of choice for architects and contractors across the country.

### The New MetalWrap Series Classifications

| MetalWrap Series    | Panel Thickness | Panel Orientation | Suitable Exterior Skins | Module | R-Value |
|---------------------|-----------------|-------------------|-------------------------|--------|---------|
| MetalWrap 100-2H    | 2"              | Horizontal        | Metal/ACM               | 36"    | R-14    |
| MetalWrap 100-3H    | 3"              | Horizontal        | Metal/ACM               | 36"    | R-21    |
| MetalWrap 100-2.0V  | 2"              | Vertical          | Metal/ACM               | 36"    | R-14    |
| MetalWrap 100-2.75V | 2.75"           | Vertical          | Metal/ACM               | 36"    | R-20    |
| MetalWrap 100-4V    | 4"              | Vertical          | Metal/ACM               | 36"    | R-27    |
| MetalWrap 200-2H    | 2"              | Horizontal        | Brick Veneer            | 32"    | R-14    |
| MetalWrap 200-3H    | 3"              | Horizontal        | Brick Veneer            | 32"    | R-21    |
| MetalWrap 200-2.0V  | 2"              | Vertical          | Brick Veneer            | 36"    | R-14    |
| MetalWrap 200-2.75V | 2.75"           | Vertical          | Brick Veneer            | 36"    | R-20    |
| MetalWrap 200-4V    | 4"              | Vertical          | Brick Veneer            | 36"    | R-27    |
| MetalWrap 300-2H    | 2"              | Horizontal        | Terra Cotta             | 32"    | R-14    |
| MetalWrap 300-3H    | 3"              | Horizontal        | Terra Cotta             | 32"    | R-21    |
| MetalWrap 300-2.0V  | 2"              | Vertical          | Terra Cotta             | 36"    | R-14    |
| MetalWrap 300-2.75V | 2.75"           | Vertical          | Terra Cotta             | 36"    | R-20    |
| MetalWrap 300-4V    | 4"              | Vertical          | Terra Cotta             | 36"    | R-27    |

## MetalWrap Series Specifications

### For use with Metal

- Width – 36 in. (914mm) / Length – 12 ft. (4m) or 20 ft. (6m) standard lengths
- Face and liner – 29GA, AZ-50 Galvalume Plus/Primed Liner\*
- Foam insulation – Minimum 2.4 PCF Urethane modified polyisocyanurate foam
- Vertical or horizontal installation for CENTRIA Concept Series®, IW Series, Exposed Fastener, and FormaBond® exterior cladding panels

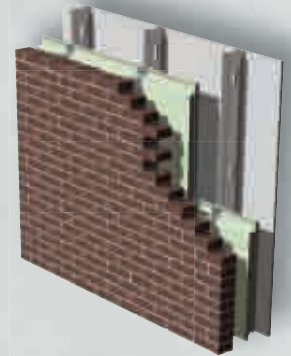
### For use with Brick

- Width – 32 in. (813mm) or 36 in. (914mm) / Length – 12 ft. (4m) or 20 ft. (6m) standard lengths
- Face and liner – 29GA Galvalume with Primer/AZ-50 Galvalume Plus Liner\*
- Foam insulation – Minimum 2.4 PCF polyisocyanurate foam
- Vertical or horizontal installation

### For use with Terra Cotta

- Width – 32 in. (813mm) / 12 ft. (4m) or 20 ft. (6m) standard lengths
- Face and liner – 29GA Galvalume with Primer/AZ-50 Galvalume Plus Liner\*
- Foam insulation – Minimum 2.4 PCF polyisocyanurate foam
- Vertical or horizontal installation

\*26GA available for fire rated walls



Patent US 7,748,181

University of Arkansas at Fayetteville | Nanoscale Science & Technology Building | HDR, Alexandria, VA



| FEATURES  | BENEFITS   |
|---|--|
| One-piece construction for all building types in any climate  | Simplified design and installation   |
| Unique foam insulated composite backup panel with tested R-value insulation:<br>2" Thick Panel = R-14<br>3" Thick Panel = R-21  | Reduced energy costs<br>More easily meets energy codes<br>Eliminates stud cavity insulation  |
| Continuous insulated barrier  | Improved thermal insulation<br>Code compliance   |
| <b>MetalWrap Series Panels provide superior:</b> <ul style="list-style-type: none"> <li>· Water drain plane</li> <li>· Moisture barrier</li> <li>· Air barrier</li> <li>· Thermal barrier</li> <li>· Vapor barrier</li> </ul>   | <b>Durability:</b> <ul style="list-style-type: none"> <li>· Reduces costs of repairing damaged materials from extended exposure to the elements</li> </ul> |
| Unique clip design for metal, integral masonry anchors for brick, integral supports for terra cotta   | Saves time and money on installation<br>Reduces mechanical penetrations through air barrier  |
| <b>Eliminates or reduces:</b> <ul style="list-style-type: none"> <li>· Multiple crews and subcontractors</li> <li>· Building wraps</li> <li>· Exterior sheathing</li> </ul>   | Easier coordination<br>Single responsibility for all four barriers   |
| <b>Universal Solution for brick, metal and terra cotta wall systems</b>   | Reduced training, single specification, use for mixed medium type buildings  |
| <b>Meets major fire codes</b><br><b>NFPA 285 tested assemblies</b>  | Reduced insurance costs<br>Code compliance   |
| <b>Environmentally superior</b> <ul style="list-style-type: none"> <li>· High volume of recycled content</li> <li>· Environmental friendliness of component materials</li> <li>· Cradle to Cradle® Certification at the Silver Level</li> <li>· Minimal construction waste</li> </ul> | Earn LEED points in categories such as energy and atmosphere, materials and resources, and indoor environmental quality                                    |
| <b>Faster close-in and dry-in means interior sub-contractors can start earlier</b>  | Helps keep projects on time and on budget  |
| <b>Incorporates ATMP® building envelope science</b>   | Controls moisture without sacrificing thermal efficiency   |

To learn more about how the MetalWrap Series system can help your next project deliver optimal energy efficiency, insulation and sustainability, visit [www.buildbetterwalls.com](http://www.buildbetterwalls.com), email [info@centria.com](mailto:info@centria.com) or call us at **800.759.7474**.